

# SHINGLE SPIT BOAT LAUNCH HORNBY ISLAND, BC

COMOX VALLEY  
REGIONAL DISTRICT

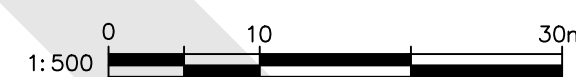


LOCATION PLAN  
NTS

NOTES ON ELEVATIONS:

1. ALL ELEVATIONS SHOWN ARE IN METERS AND REDUCED TO CHART DATUM (LLWLT = 0m). CHART DATUM IS 3.089 BELOW GEODETIC CGVD28 VERTICAL DATUM AS DEFINED AT THE PUBLISHED CHS BENCHMARK 29-1967 LOCATED IN FORDS COVE.
2. MEAN WATER LEVEL (MWL) IS EQUAL TO 3.2m
3. LOWEST LOW WATER LARGE TIDE (LLWLT) IS EQUAL TO 0.0m
4. HIGHEST HIGH WATER LARGE TIDE (HHWLT) IS EQUAL TO 5.3m
5. MEAN HIGH WATER LEVEL (HHW) IS EQUAL TO 4.6m
6. MEAN LOW WATER LEVEL (LLW) IS EQUAL TO 1.2m

KEY PLAN



LEGEND

EXISTING	PROPOSED	EXISTING	PROPOSED	EXISTING	PROPOSED
LAMP STANDARD	LS	CLEANOUT	CO	WATER	W
UTILITY POLE	UP	CATCHBASIN	CB	SANITARY	S
GUY WIRE ANCHOR	WA	ROUND CATCHBASIN	RCB	STORM	ST
U/G HYDRO/TEL/CABLE	HC	MANHOLE	MH	WATER METER	WM
JUNCTION BOX	JB	INSPECTION CHAMBER	IC	FLUSHOUT	FO
GAS	G	MOUNTABLE CURB & GUTTER	MC	GATE VALVE	GV
FENCE	F	NON-MOUNT. CURB & GUTTER	NMC	REDUCER	R
ELEVATION	109.28	ASPHALT CURB	AC	FIRE HYDRANT	FH
EDGE ASPHALT	EA	TOP OF BANK	TOB	AIR RELEASE VALVE	ARV
ASPHALT REMOVAL	AR	BOTTOM OF BANK	BOB	DITCH	D
PROPOSED ASPHALT	PA	CULVERT OUTLET	CO	ROAD SIGN	RS
PROPOSED CONCRETE	PC	CULVERT HEADWALL	CH	CENTERLINE ALIGNMENT	CLA

DRAWING LIST

- CASCARA
- C01 LOCATION PLAN, KEY PLAN, DRAWING LIST & GENERAL NOTES
  - C02 OVERALL SITE PLAN
  - C03 AUTO TURN TRAFFIC MANEUVERS
  - C04 DETAILS

SHINGLE SPIT  
BOAT LAUNCH

HORNBY ISLAND, B.C.

DRAWING TITLE:

LOCATION PLAN,  
KEY PLAN, DRAWING LIST  
& GENERAL NOTES

**CASCARA**  
CONSULTING ENGINEERS LIMITED  
EGBC PERMIT No. 1000784

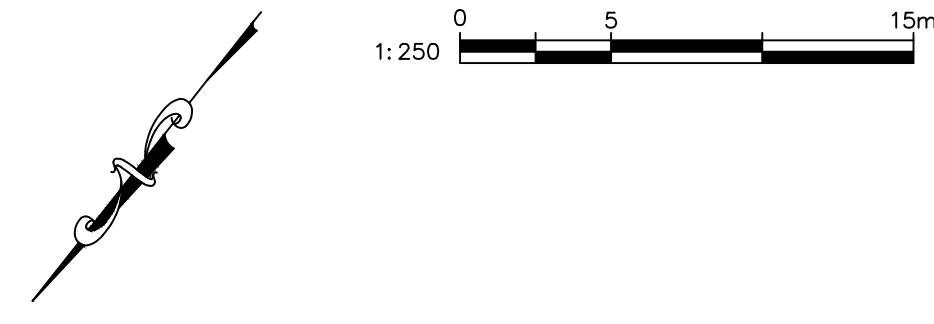
#206-335 WESLEY STREET NANAIMO, BC V9R 2T5  
TEL: 250.591.7364 EMAIL: info@cascara.ca

DESIGN BY: BGF CHECKED BY: CDR  
DRAWN BY: APPROVED BY:

SCALE: HORIZ: SHOWN VERT: ---  
DATE: 2024FEB23 SHEET: 1 OF 4  
ENG. FILE NUMBER:  
CITY DWG #: PROJECT #:  
DRAWING NUMBER: 1172-001

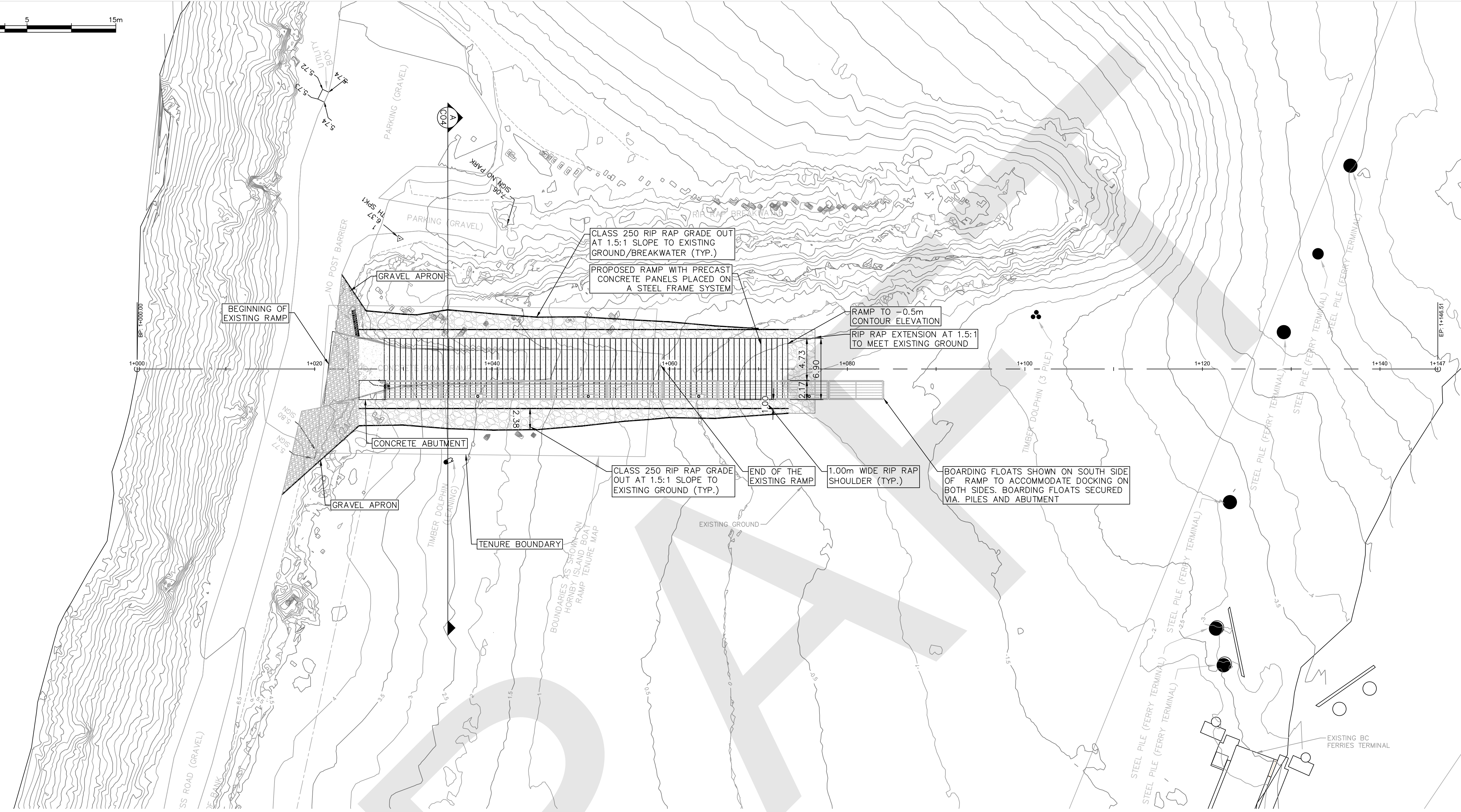
**DRAFT**

DRAWING NUMBER: **C01** REV: **A**



CLIENT  
**COMOX VALLEY  
REGIONAL DISTRICT**

REV.	DATE	BY	DESCRIPTION	ENG
B	2024MAR28	BGF	REISSUED FOR REVIEW	BGF
A	2024FEB23	BGF	ISSUED FOR REVIEW	BGF



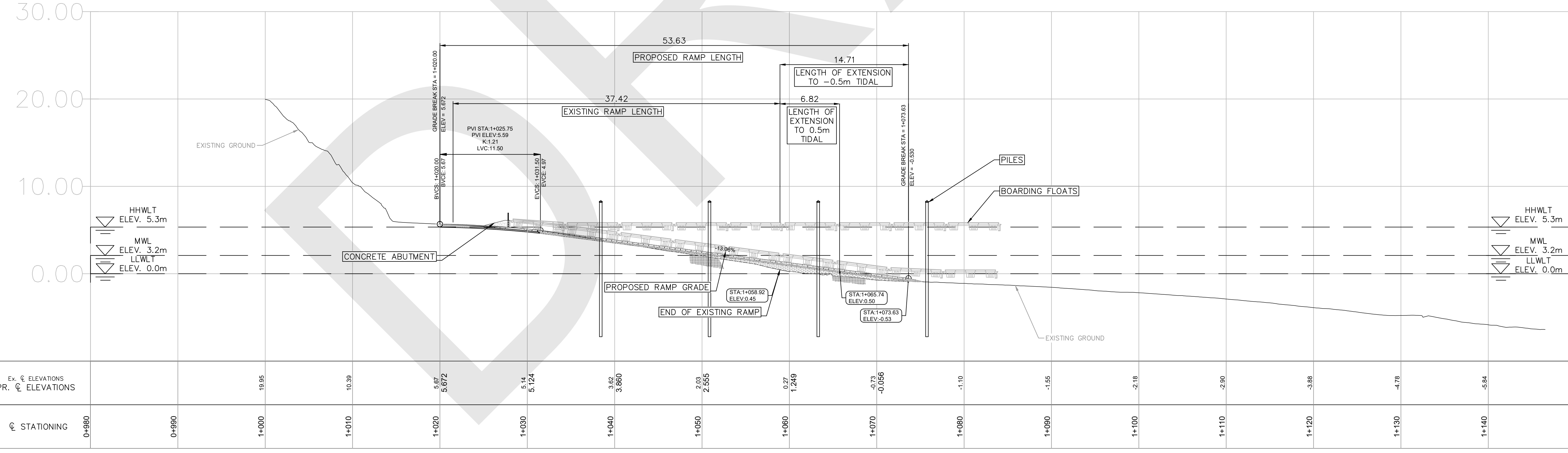
**SHINGLE SPIT  
BOAT LAUNCH**

**HORNBY ISLAND, B.C.**

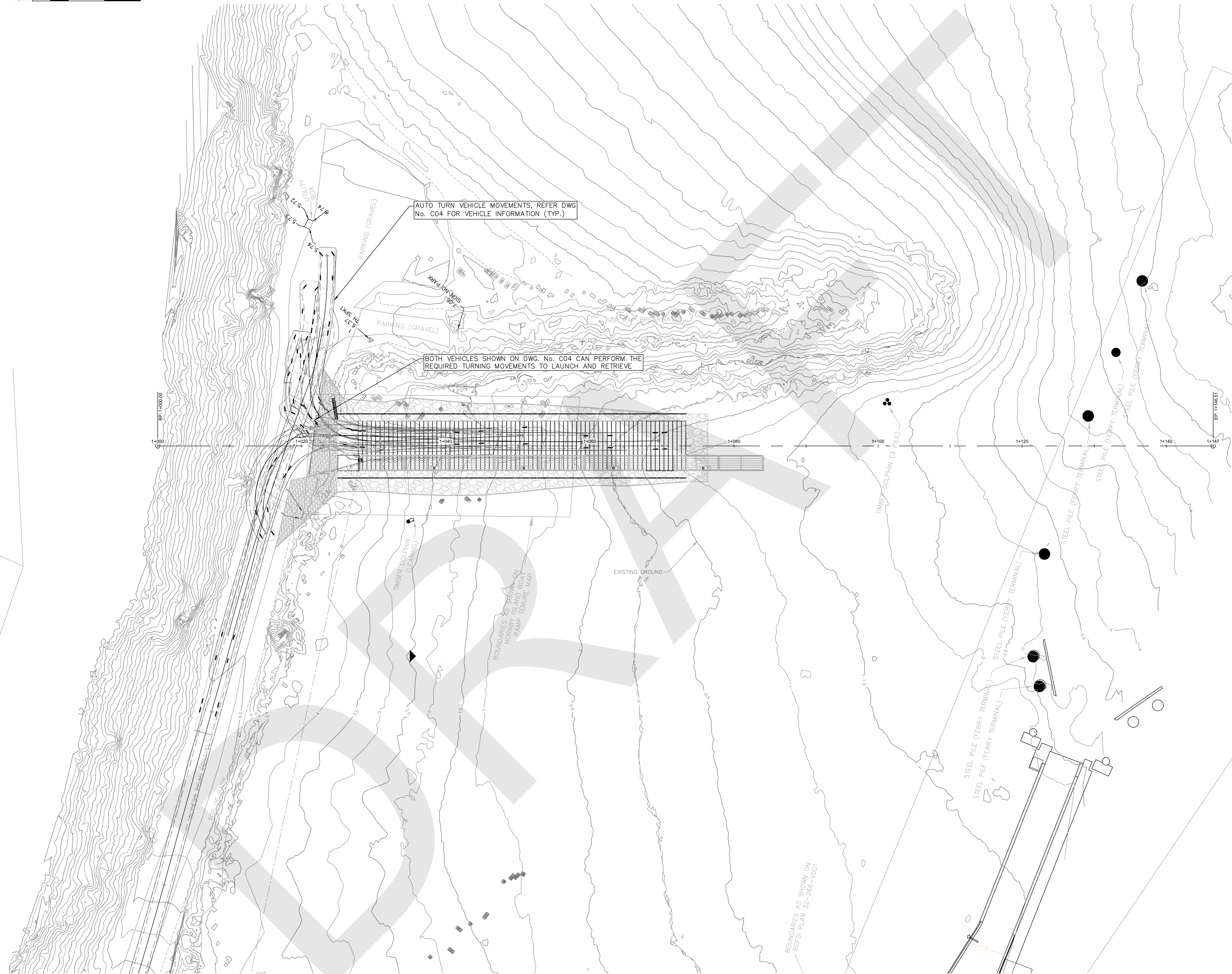
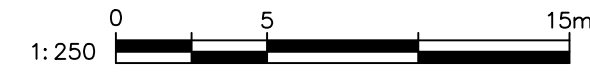
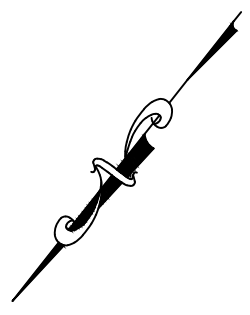
DRAWING TITLE:  
**OVERALL  
SITE PLAN**

**CASCARA**  
CONSULTING ENGINEERS LIMITED  
EGBC PERMIT No. 1000784  
#206-335 WESLEY STREET NANAIMO, BC V9R 2T5  
TEL: 250.591.7364 EMAIL: info@cascara.ca

DESIGN BY: BGF	CHECKED BY: CDR
DRAWN BY:	APPROVED BY:
SCALE: HORIZ: SHOWN VERT: ----	DATE: 2024FEB23 SHEET: 2 OF 4
CITY DWG #: 1372-001	PROJECT #: 1372-001
DRAWING NUMBER: C02	REV: A



P:\PROJECTS\1172-001 HORNBY ISLAND BOAT LAUNCH\04 - DRAWINGS\1172-001 CIVIL DRAWINGS  
3.28.2024



COMOX VALLEY  
REGIONAL DISTRICT

REV.	DATE	BY	DESCRIPTION	ENG
B	2024MAR28	BGF	ISSUED FOR REVIEW	BGF
A	2024FEB23	BGF	ISSUED FOR REVIEW	BGF

**SHINGLE SPIT  
BOAT LAUNCH**

HORNBY ISLAND, B.C.

DRAWING TITLE:  
**AUTO TURN  
VEHICLE MOVEMENTS**

**CASCARA**  
CONSULTING ENGINEERS LIMITED  
EGBC PERMIT No. 1000784  
#206-335 WESLEY STREET NANAIMO, BC V9R 2T5  
TEL: 250.591.7364 EMAIL: info@cascara.ca

DESIGN BY: BGF	CHECKED BY: CDR
DRAWN BY:	APPROVED BY:
SCALE:	HORIZ: SHOWN VERT: ----
	DATE: 2024FEB23 SHEET: 3 OF 4
	ENG. FILE NUMBER:
CITY DWG #:	PROJECT #:
DRAWING NUMBER: C03	REV: A

